

033325

RECEIVED
LARAMIE COUNTY
CHEYENNE, WY.

'87 AUG 28 AM 9 06

CERTIFIED LAND CORNER RECORDATION

DESCRIPTION OF CORNER EVIDENCE FOUND, AND ORIGINAL RECORD (if known)

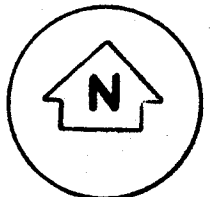
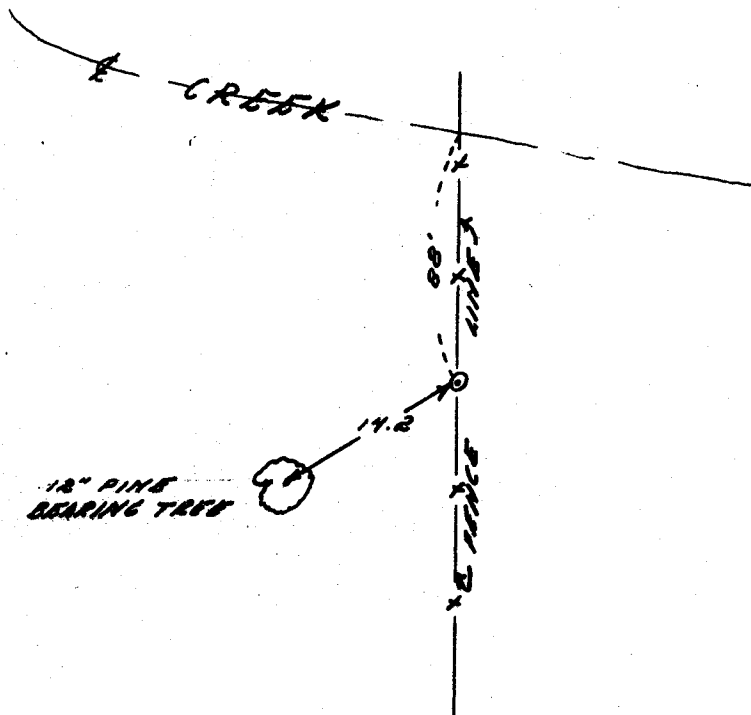
T. 14 N.
1/4 9 | 10
R. 70 W.

FOUND: STANDARD G.L.O. BRASS CAP PROJECTING 3" ABOVE GROUND AND A 12" PINE BEARING TREE BEARS S 55° W A DISTANCE OF 14.2 FEET SCRIBED "59 87"

DESCRIPTION OF MONUMENT AND ACCESSORIES ESTABLISHED TO PERPETUATE THE ORIGINAL LOCATION OF THIS CORNER:

SEE TIES BELOW

SKETCH, WITH COURSE AND DISTANCE TO ADJACENT CORNER IF DETERMINED IN THIS SURVEY. (May Sketch or Paste Reproduction on Reverse Side.)



I, TOMMY A. STELL certify that I have carefully performed or reviewed the work done on the diagrammed corner as reported on this recordation form and approve the same.

Tommy A. Stell
Signature of Surveyor

49,2500
Registration No.

STATE OF WYOMING,
Office of Clerk and Recorder,
County of Laramie

This "corner record" was filed for record on the 28 day of August, 1987, was noted on the cross-index plat and is assigned page No. _____, in book No. _____

Jack C. Whitehead
County Official

| | | | |
|----------------------------|--------------|--------------|------|
| Cross Index No. <u>673</u> | T. <u>14</u> | R. <u>70</u> | Mer. |
| _____ | T. _____ | R. _____ | Mer. |
| _____ | T. _____ | R. _____ | Mer. |
| _____ | T. _____ | R. _____ | Mer. |
| _____ | T. _____ | R. _____ | Mer. |
| _____ | T. _____ | R. _____ | Mer. |
| _____ | T. _____ | R. _____ | Mer. |